

• BOARD MEETING MINUTES - MAY 21, 2008 •

The Rochdale Board met at Rick Wagener's home. In attendance were Jo Ann Bourez, Ed Brouhard, Edna Coghlan, Warren De Witt, Tom Greaves, Brian Kirkland, Rick Wagener, and Mike Wood. The following items were discussed:



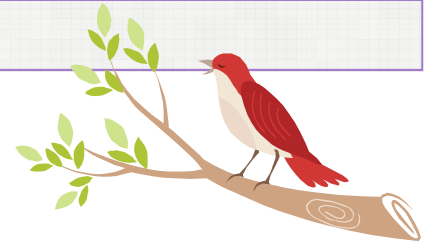
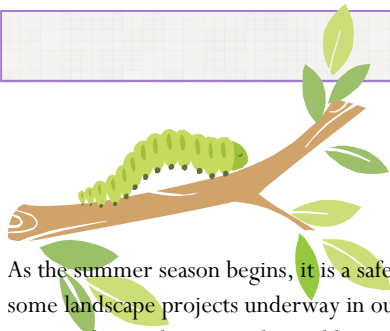
- The Treasurer's report was accepted and approved. Expenditures included our legal fees to date for the subdivision response to a suit by the owner of the property at 26 Rochdale (Michael Plourdes) to have the property rezoned commercial. This is an expense that no one anticipated or wanted, but the Board feels confident that the Rochdale homeowners will prevail.
- Regarding the rezoning case, if not resolved earlier, the court date is set for August 15, with the Hon. Michael Warren presiding. If it seems desirable to have Rochdale residents there in support, a flyer will be distributed with particulars.
- The Board approved a request for a room addition at 1479 Stockdale.
- The pond has been treated with algaecide by our regular provider, "Pond Guy." In this year of unusual weather, it will be monitored carefully for future needs.
- The Board discussed options for improving the south bank of the pond, including pylon and timber removal and renovation. Final decisions will have to wait until the resolution of our court case.
- Wood chips will be added to the playground area. If residents have tree removals on their property and need to dispose of wood chips, we may be able to use these, however, they should not include evergreens. Call Warren De Witt at 248-651-8336.
- The Board continues to explore all cost-cutting measures for electricity in the park. It was decided to go to an automatic payment plan (with a statement) to facilitate the process.

ROCHDALE TIMES - JUNE '08

In this issue:

Board Meeting Minutes	1	Rochdale Association Annual Meeting	3
Tree Care Corner	2	Neighborhood News	4
Garage Sale	3	Rochdale Directory	4
Subdivision Picnic	3	The Storm of June, 2008	4

- We continue to use Avery for the park lawn cutting, but will explore other companies if they offer better prices and good service.
- Tree stumps in the park need to be removed. This item will be addressed at this summer's board meeting.
- Dates were firmed up for the subdivision garage sale (June 20 and 21). We will purchase two signage frames for the entrances on Walton, which will be used for all subdivision announcements. (See the article below for garage sale specifics).
- The Rochdale Annual Meeting will take place Tuesday, June 24, at 7:00 p.m. This year we will meet at the Rochester Hills City Hall auditorium. This is being offered at no charge to us. We hope that an evening meeting will facilitate a good turnout. This meeting is required by our by-laws. A major order of business will be election of the Board for the coming year. (See item below).
- The annual Rochdale picnic will take place Sunday, August 24, between 5:00 p.m. and 7:00 p.m. in the park. Last year's picnic was a resounding success, so a good turnout is expected. The Board will again supply hot dogs, hamburgers, buns and condiments, plus pop and water. Additional dishes will be potluck (See item below).
- The Rochdale by-laws are good until 2014. However, in the next year the Board will look at updating the by-laws as necessary.
- The Board appreciates the work done by members on the new 2008 Rochdale Association Directory. Excellent job!
- The meeting was adjourned. The next board meeting will take place in July, on a date to be determined, following the election of the new board.



Mulch

The good • The bad • The ugly

By Warren DeWitt

As the summer season begins, it is a safe bet that there will soon be some landscape projects underway in our sub-division. Being in the green industry there is nothing I like more than to see these landscape ideas unfold and turn into ones own little oasis of relaxation, providing added beauty to individual yards and Rochdale subdivision as a whole. My wife, Caryn and “soon” my son Dillon, can tell you that a walk around the sub is an education in arboriculture, plant identification and a reminder of our own wish list.

There is however, a common practice lurking about that I would like to prevent from entering our subdivision, which in turn will keep your plants healthy and me happy on my family walks. The common practice of mulching around our trees and shrubs has many added benefits, good, but can also be harmful if applied incorrectly, bad, and in my opinion, depending on the type can also be ugly.

THE GOOD: The benefits of adding mulch around trees and shrubs accomplishes many things. Mulch acts as a weed barrier, suppressing weeds and unwanted plants from growing near our desirable plants without limiting water and oxygen from penetrating the soil like plastic and fabric weed barriers can. Mulch also aids in moisture retention, it slows evaporation by blocking the suns rays from the underlying soil. By retaining the moisture, we help avoid drought stress and protect tender roots from frost freeze cycles. This is very important around the delicate root zones on newly planted trees and shrubs. Mulch, over time, also breaks down naturally adding organic matter/nutrients to the soil. In open areas where trees and shrubs are surrounded by lawn, mulch can protect the trunks from weed whip and lawn mower damage and protect the root zone from soil compaction caused by heavy mowers. This holds true with both young and matures trees and shrubs.

THE BAD: The common, unhealthy and disliked practice I mentioned above is known as a “mulch volcano” and we need go no further than most shopping malls or the grounds of Rochester High School to see examples of this practice. A “mulch volcano” is created when mulch is piled up high around the trunks of trees or shrubs. These mulch volcano’s evolved over the years, mostly on commercial properties, because of newly planted trees being planted too high and mulch being installed too often and/or in large amounts. This soon became a trend because many liked the look of the mulch volcano, but looks are not everything. The problem with the mulch volcano is that they are very unhealthy for trees and shrubs. As we know, mulch retains moisture, but when the mulch is piled up against the root flare and base of the tree trunk it keeps this area wet and warm, making a perfect area for insects to live, lay eggs and eat. Guess what they eat?

This also makes a great spot for tree-harming fungus to grow and multiply, increasing the chances of root and trunk rot. The root flare of trees and shrubs is also an area where the bark absorbs oxygen. The mulch volcano slows or stops this from happening, suffocating the plant. If that is not enough “bad” news, the deep mulch can also cause shallow surface roots because they too are being suffocated.

Knowing this, let’s not be copy-cats of others and hurt our trees and shrubs. In order to receive the benefits of mulch without causing harm it is recommended that mulch be installed no deeper than two inches around the plants, with the mulch ring being as wide as you desire.

THE UGLY: The ugly side of mulch is my opinion, but I would like to explain the differences in the types of mulch along with some of the pros and cons of each.

What I consider ugly mulch is usually labeled “enviro-mulch”, which is ground-up, recycled pallets that is dyed red, orange, and black - ugly! This mulch is found in Wendy’s and Burger King landscapes. As these dyes start to fade this enviro-mulch becomes uglier by turning shades of icky gray. It’s great that we have found a use for old pallets, but this mulch can have unwanted materials, such as toxins present from chemical spills on pallets and metal from nails. Enviro-mulch is also slow to break down, limiting the organic benefit of mulching.



Other types of mulch can be Shredded Hard Wood (sometimes dyed black or brown) or Shredded Bark, Pine Bark Chunks, Cedar and Pine Needles. All have good benefits if applied correctly and can usually last at least two seasons. Wood chips that tree companies often offer for free can also be used as mulch, but are also slow to break down and often attract insects.

Well, as you can see by the length of this article, a walk in the sub with me could be a little overwhelming, but even I am surprised at how much I had to say about mulch. I hope it has been educational and it will keep the harmful “mulch volcano” from entering our sub and harming your trees and shrubs. As always, if anyone has any questions about mulch or trees please feel free to call me.

P.S. There was a small error in the last newsletter. The line “we are being invaded” was intended for the subject of Buckthorn, not Oak wilt and Dutch elm disease.

• GARAGE SALE •

The annual Rochdale garage sale will take place June 20 and 21 (Friday and Saturday). If you plan to participate, please contact Warren or Caryn De Witt (248-651-8336) for information packets. As always, we request a \$5.00 donation to help offset the cost of advertising in local papers.

Editor's note: Apologies for the relatively late notice. Our subdivision power failure delayed the publication of this newsletter.

• SUBDIVISION PICNIC •

This year the Rochdale Subdivision picnic will be held Sunday, August 24, between 5:00 p.m. and 7:00 p.m. in the park. As always, the Association will provide hotdogs and hamburgers, condiments, and, this year, pop and water. Residents should bring a dish to pass. (Even-numbered addresses bring dessert/munchies; odd-numbered addresses bring salad or side dish).

This is a great opportunity to see old friends and meet new neighbors. Last year's turnout was fantastic, and many people commented on how much they enjoyed it. Let's keep the tradition going! Folding chairs are always a good idea.



• ROCHDALE ASSOCIATION ANNUAL MEETING •

The Rochdale annual meeting will take place Tuesday, June 24, at 7:00 p.m. This year we will meet at the Rochester Hills City Hall, 1000 Rochester Hills Drive, off Avon Rd. just west of Livernois. The auditorium is being offered to us free, and it is hoped that the Tuesday evening time will encourage a good resident turnout.

The Annual Meeting is required by our Association By-laws. One of the important items of business is to elect a new Association Board for the

coming year, including four officers. As per the by-laws, there are both one year and two year terms for directors. This year, the following board members' terms expire:

Two year terms

Ed Brouhard
Edna Coghlan
Rick Wagener

One year terms

Mark Bunch
Brian Kirkland
Michael Wood

All of these members have said they would be willing to remain on the board. Randy McGillis, current vice-president, is leaving the board, and Jo Ann Bourez, Warren De Witt, and Tom Greaves are finishing the first of their two-year terms.

The Rochdale by-laws state that there must be a minimum of ten board members which includes the four officers (president, vice-president, secretary, and treasurer). However, board members are not limited to ten. Therefore, we need to elect a minimum of seven board members, which will entail at least one new nomination. Other nominations are encouraged as well. If you are interested in being nominated, contact Ed Brouhard, Rochdale secretary, to have your name included on the ballot (phone 248-651-7178 or email ebrouhard@ameritech.net). The top three vote-getters will be elected to two-year terms, the remainder to one-year terms. Ballots will be prepared in advance for the meeting, but write-ins and additional nominations are allowed.

Once the Directors are elected, the four officers will be chosen. The following people, if elected to the board, are willing to continue as officers: Rick Wagener (president), Ed Brouhard (secretary), Edna Coghlan (treasurer). Nominations for officers can be done verbally, and voted on by a show of hands.

The Rochdale Board of directors is a legally elected body. Therefore, election procedures must be fair and consistent. Hopefully, we will have a good resident turnout at the meeting.

• ROCHDALE DIRECTORY •



After a long wait, the Rochdale Directory has been published and distributed. Congratulations and thanks to all the board members who worked diligently on it. If there are any corrections or additions that need to be made for the next Rochdale Directory, please call Jo Ann Bourez, 248-651-7526.

• NEIGHBORHOOD NEWS •



Congratulations to Geoff Brouhard, son of Ed and Yvonne, 1493 Gracedale. He and fiancée Kris Zoellner will be married June 28. Kris is a Rochester Hills girl, growing up on North Rochdale.

Geoff hopes to be teaching music in an area public school in the next year. Kris is employed by Metropolitan Title and plans to pursue post-graduate work in health care.

The Rochdale subdivision has produced a bumper crop of new high school graduates this year. Hearty congratulations to the following Rochdale seniors, all graduating this year from RHS:

Dan Bradley	Cameron Nabors
Ryan Coghlan	Nicholas Pagnani
Kaitlyn Scott Davis	Camille Smith-Winberry
Stephan Duronio	

All your hard work has finally paid off. Enjoy your summer, and best luck for your endeavors in the fall. We're proud of you.

A warm welcome to the newer neighbors we have met so far:

Laurie Decker, 530 Orchardale, and sons Nick and Zack
Anna and Rob Ciaciuch, 1511 Gracedale, and son Liam
Janet and Jon Ensiso, 326 Orchardale, and Katie, Jordan, and Blake
Lowel and Rose Lewis, 295 Rochdale

(Note: The "Welcome Lady", Jo Ann Bourez, has yet to meet and greet two new families. They will be welcomed in the next newsletter.)

Larry Anderson, 51 Orchardale, was deeply saddened at the accidental drowning of his great-granddaughter, Alexis Bowles, 18-months old, from Romulus. Our sincere sympathy to both Larry and to Doris Tock.

In addition, it is with great sadness that we send condolences to Lou Bandemer at the passing of her husband, long-time resident Ray, 1439 Gracedale.

• THE STORM OF JUNE, 2008 •

As we all know, much of Oakland Country and a good deal of Michigan were hit by a brief but violent storm on Sunday, June 8, in the late afternoon. It caused considerable damage, and Rochdale was no exception. Most were without power for much of the week, lost many beautiful trees, and had to face a considerable cleanup. In fact, the air has been filled with the sound of chainsaws, wood chippers, generators,



and overflowing sump pumps. Thanks to AT & T for stationing a truck at the front of Rochdale to provide a dial tone for phones ("now where in the heck did we put that old cord phone?").

Most importantly, there were no serious injuries reported, and The Rochester Library, Panera, and Caribou Coffee provided Wi-Fi for computers. While providing a sense of adventure, it is probably one we could do without in the future.

• WE WANT TO HEAR FROM YOU •



If you have news to include in the next Rochdale Times please pass it along to a board member or email Ed Brouhard at ebrouhard@ameritech.net.

This newsletter has always been a place where residents could make announcements and share news about kids, school, special events, concerns, thank yous, etc. We can also include digital picture you'd like to share.



ROCHDALE SUBDIVISION

Rochdale Association
P.O. Box 81362
Rochester Hills, MI 48308-1362

OFFICERS: Rick Wagener, President 656-4899
Randy McGillis, Vice Pres. 652-4952
Edna Coghlan, Treasurer 608-8695
Ed Brouhard, Secretary 651-7178

DIRECTORS: Jo Ann Bourez 651-7526
Mark Bunch 650-3228
Warren DeWitt 651-8336
Tom Greaves 651-1710
Brian Kirkland 953-8098
Michael Wood 656-1053

Printing anonymously donated